

**1. Choose the correct words in these groups of words.**

- a) video on **command/request/demand** - a system for watching films or recorded programmes on the internet or TV at any time (AKA streaming)
- b) **captions/credits/credentials** - a list of people involved in making a film or TV programme that is shown at the end or beginning of it
- c) **high time/prime time/apex time** - the time when the largest number of people are watching TV or listening to the radio
- d) **rerun/replay/retake** - a programme that is being shown on TV again
- e) **zap/zip/zig** - change the channel you are watching on TV using a remote control
- f) **air/voice/display** - broadcast something on the radio or TV
- g) **worshiper/prescriber/subscriber** - someone who pays money in order to receive something regularly
- h) **comms/commercials/commerces** - advertisements on TV or the radio

**2. Complete the questions with the correct words from ex. 1. Next, discuss these questions in pairs.**

- a) If you've missed a film on TV, do you ever try and catch a **rerun**?
- b) When you watch TV, do you tend to **zap** between channels because of the commercial break?
- c) Are you a **subscriber** to any video on **demand** services? If yes, was it the absence of **commercials** that convinced you to use such services?
- d) Do you like the idea that platforms such as Netflix **air** all episodes of some TV series at once?

**3. Read the sentences and figure out what *binge watching* means, and create a sentence with it.**

*binge (on something)* - do something in a way that is extreme and not controlled

- Heavy and regular **binge drinking** during adolescence is associated with an increased risk of alcoholism.

**Let's binge watch it together!**

- **Binge eating** often leads to weight gain and obesity, which only reinforces compulsive eating.

Your sentence: .....

**4. Read the statistics and choose your answers: 1, 2 or 3.**

a) Half of television viewers have binge watched ..... hours of a TV show in one go.

1) six

2) seven

3) **eight**

b) ..... of binge watchers have sacrificed sleep to continue watching a TV show.

1) 28%

2) 58%

3) **80%**

c) One in ..... British workers admits to calling in sick to stay at home and binge watch TV shows.

1) **five**

2) seven

3) ten

d) Nearly ..... of us have lied about watching a series because other people were talking about it.

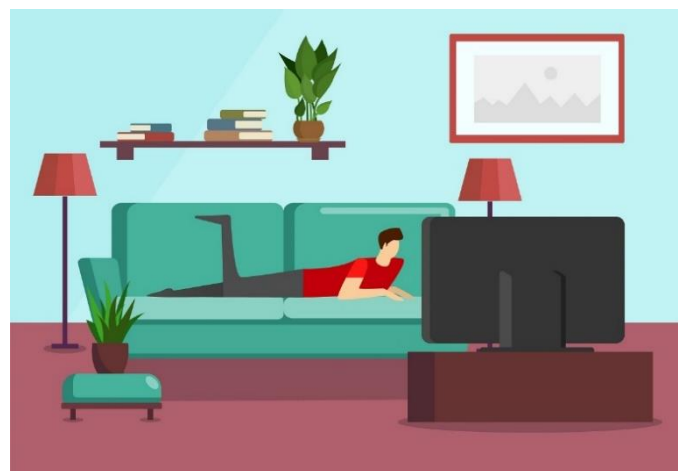
1) 1/2

2) 1/3

3) **1/4**

**5. Discuss the questions.**

- Are you surprised by these statistics?
- Do you ever binge watch? How many hours do you binge watch in one go?
- Have you ever sacrificed sleep to continue watching your favourite TV series?
- Have you ever called in sick or cancelled social plans to watch a show?
- Would you ever lie about watching a series if your friends were talking about it?



6. Watch the first part (to 02:34) of the [video](http://bit.ly/Bingeing) [http://bit.ly/Bingeing] and answer the questions.

a) What does Netflix do to encourage binge watching?

When an episode finishes, the credits are minimised to the corner of the screen and the next episode is loaded straight away.

b) Why are people embarrassed by binge watching?

Because it means that they're not productive.

c) What is special about such TV series as *Big Little Lies*?

They are created in such a way that you can find a character that you can relate to.

7. Watch the second part of the [video](#) (02:34 - 05:02) and complete the sentences below with one to three words.

a) In the very emotional episode *Splat* of *Sex and The City*, one of the characters **falls out** of a window.

b) Binge watching activates your brain, so watching dramatic events in the evening won't be good for your **sleep**.

c) *Orange is the New Black* with the cast **of about 40** wouldn't work so well if it were broadcast on traditional TV.

d) Bingeing is a word with a **negative** meaning.

8. The sentences below include the language used in the video. Decide what the phrases in bold mean.

a) Netflix realized that a lot of people **gravitate towards** watching a lot of episodes in one go and started releasing the whole series at once.

have a natural tendency to

OR

be addicted to

b) The Netflix feature which immediately loads the next episode is there to **nudge** you to watch more and more.

encourage gently

OR

force to do something

**Let's binge watch it together!**

c) She shops **in bulk** to minimise packaging and takes the bus whenever possible.

buy in large shops

**OR**

buy in large amounts

d) I sometimes **get sucked into** watching a show for three hours without even noticing.

become very involved in something

**OR**

be tricked to do something

e) Even the minor characters in these TV shows come with their own **story arcs** when you have several seasons.

a story very important for the whole plot

**OR**

a complete story in a film/book

f) It is very difficult to **discriminate between** the concepts of irony, satire, and parody.

differentiate

**OR**

select from a group

**9. Choose one of the topics below and in pairs prepare a list of arguments for one side. Next, in groups of four defend your point of view and exchange arguments. When you're done - choose another topic and have another short debate.**

Releasing a whole TV series season at once

**OR**

Releasing episodes of TV series once a week

---

Watching movies via a streaming service at home

**OR**

Watching movies in the cinema

---

Watching only cable TV with dozens of channels

**OR**

Using a streaming service and not watching traditional TV at all

---

Watching too much TV destroys social interaction

**OR**

Watching TV series helps to create social interactions